

HERITAGE PROFILES DEVELOPED FOLLOWING EXTENSIVE CONSULTATION WITH CONSERVATION BODIES AND HOUSING ASSOCIATIONS

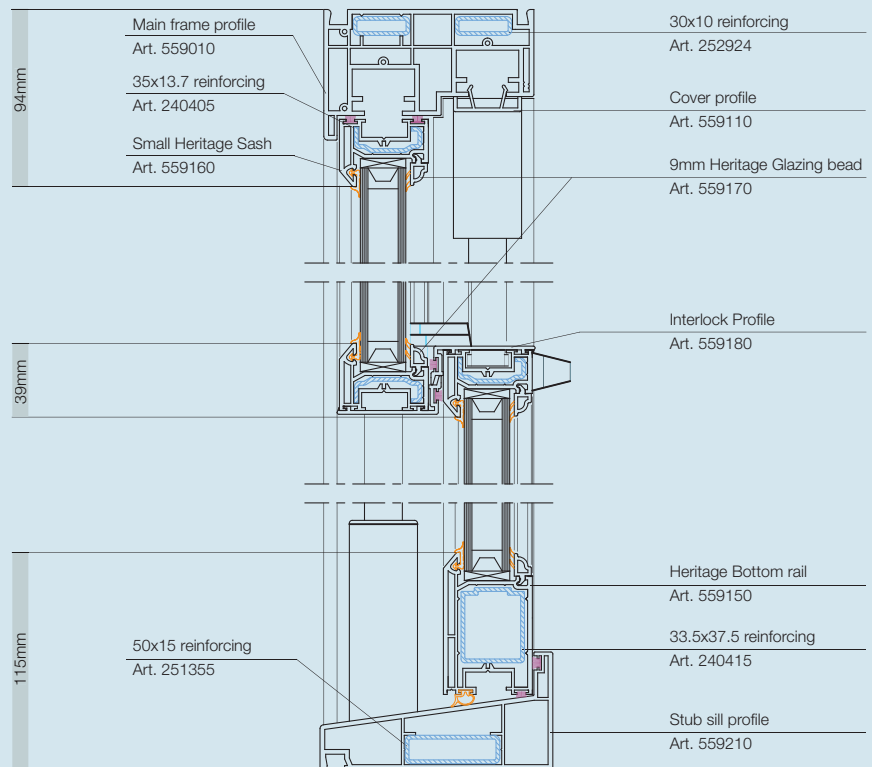


Vertical sliding window heritage style

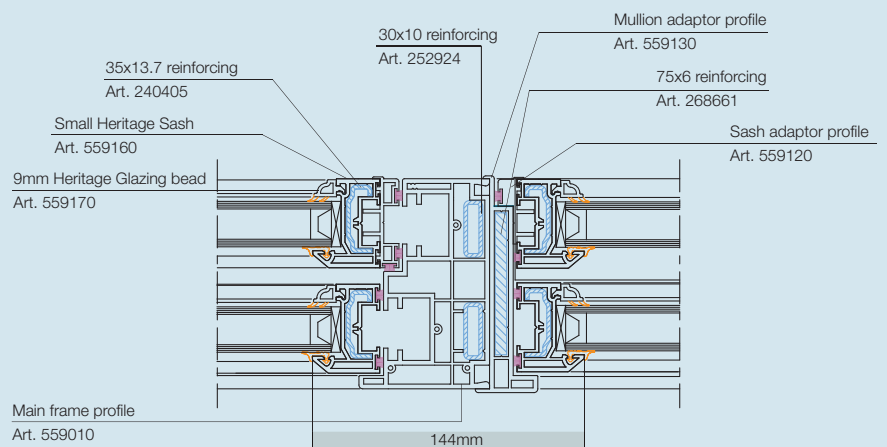


REHAU S719 Vertical Sliding Window

Vertical Section



Horizontal Section through mullion detail



DETAILED DRAWINGS ARE AVAILABLE ON REQUEST

Approvals

BS7412 - report no. 261/000659

BBA - report nos. 934, 1843 & 1844

Residential Doors – REHAU S706 70mm & REHAU-Tritec 60mm

2



Characteristics

- Choice of chamfered profiles using S706 or fully sculptured using the REHAU-Edge system
- Available in open-in and open-out styles for a variety of installations
- Compatible with casement, fully reversible, pivot and tilt/turn windows and French and tilt/slide doors
- Can be incorporated into REHAU's conservatory designs

Appearance

- Available in white, mahogany, rosewood and golden oak on white, mahogany, rosewood and golden oak both sides as standard
- For other non-standard laminate options and the range of RAL colours available using our Acryl II colour system please refer to page 34

Reinforcement

- Fully reinforced sash using galvanised steel
- Pre-routed on locking side ensures continuous reinforcement
- REHAU's innovative weldable corner joint system can be incorporated to increase rigidity of the door

Insulation

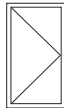
- Complies with the requirements of the Building Regulations covering Conservation of Fuel & Power - Part L (England & Wales) and Part J (Scotland) when glazed using the correct type of sealed unit
- Sound insulation is dependent on glazing specification. For more information please consult one of our Commercial Sales Managers

Fittings and Hardware

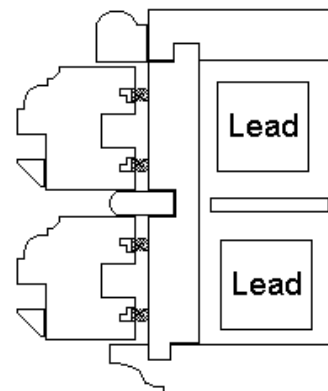
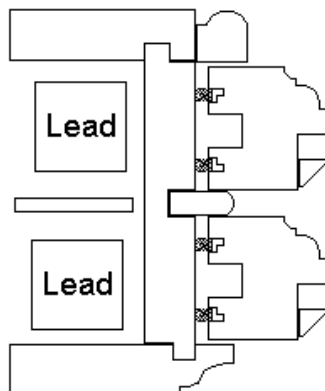
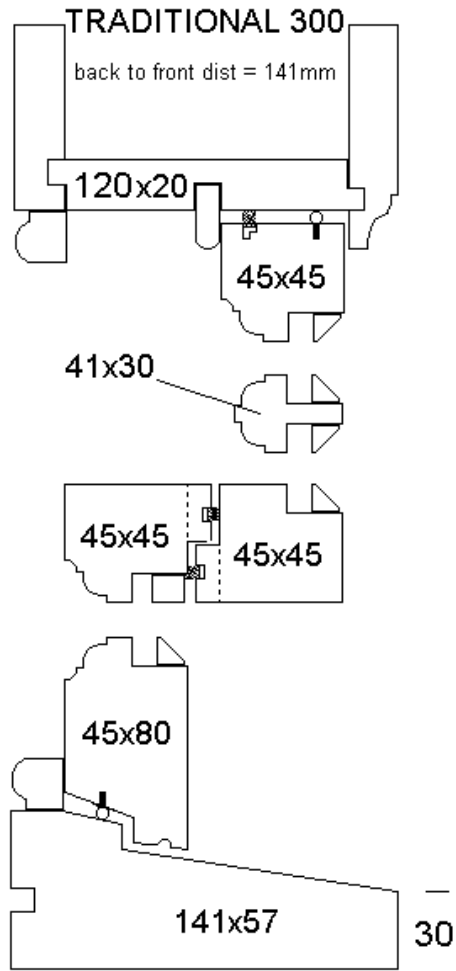
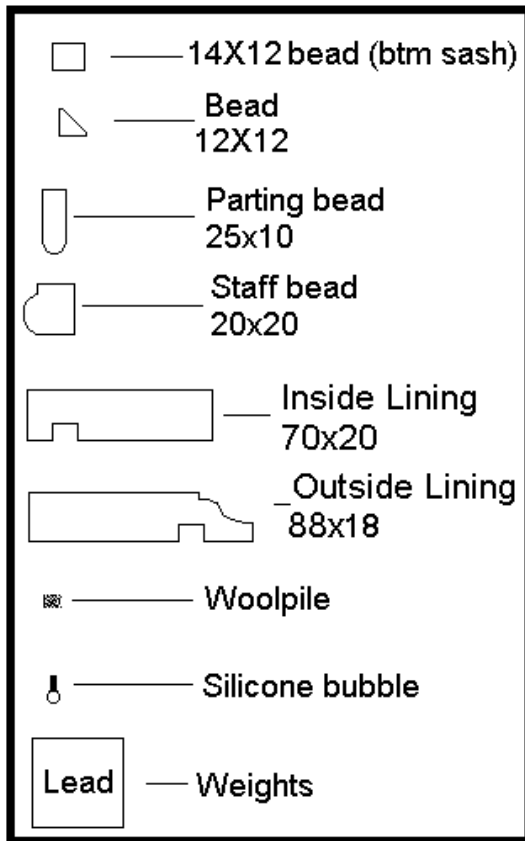
- Can accommodate most standard locking mechanism including high security bolt systems
- Flag or butt hinges
- Manufacturers recommendations on maintenance should be followed

Glazing

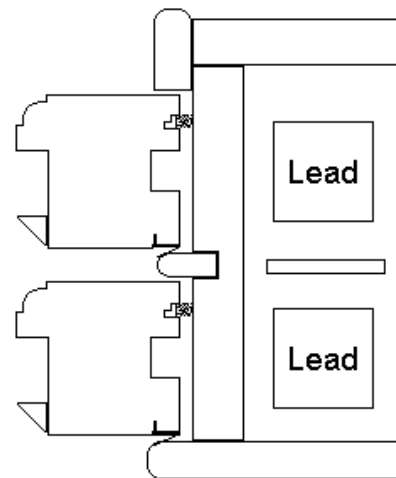
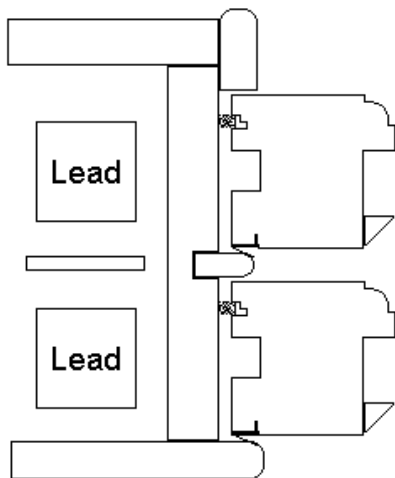
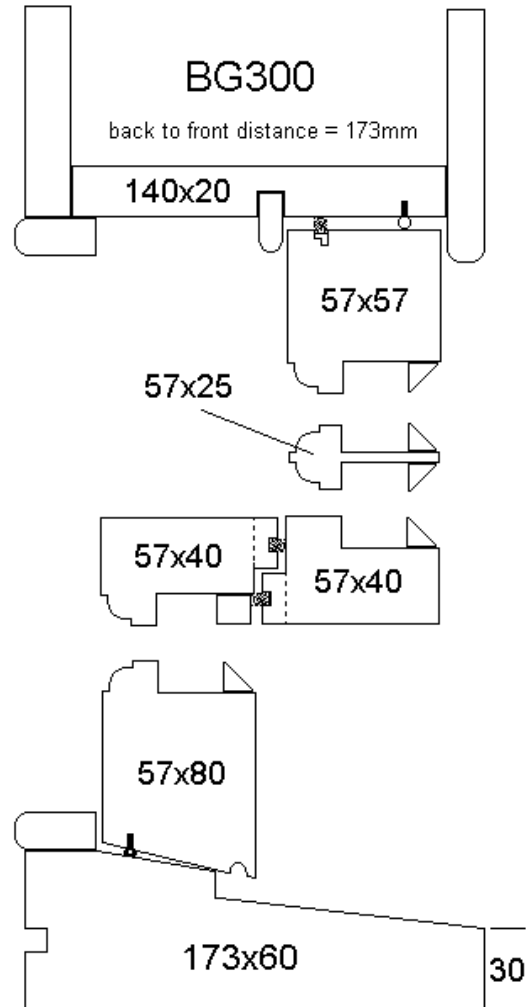
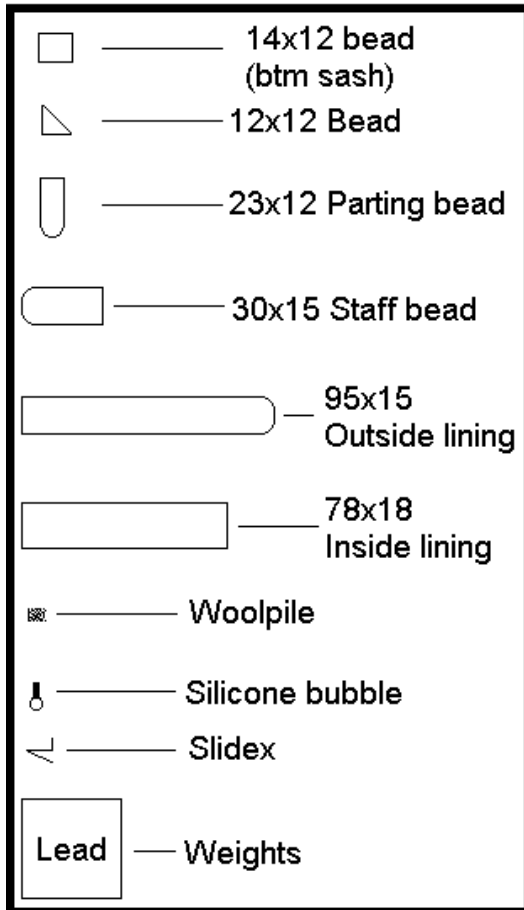
- 4mm to 32mm double glazing
- Glazing depth can be extended to 42mm
- Must be fitted with safety glass, which meets BS6262
- Dry glazing with glazing bead and gasket or a co-extruded glazing bead
- Choice of sloped or sculptured beads
- Low level glazing option available

Maximum Sash Sizes		Residential Door		
<p>NB: Sash width shown not less than 590mm. Butt hinges should be used when producing door sashes under 850mm widths.</p>				
Sash	Finish	MAX		
		W x H cm	m ²	kg
Sash Z	White	100x220		100
Sash T	White	100x200		100
Sash Z	Coloured/Foiled	100x210		100
Sash T	Coloured/Foiled	100x210		100

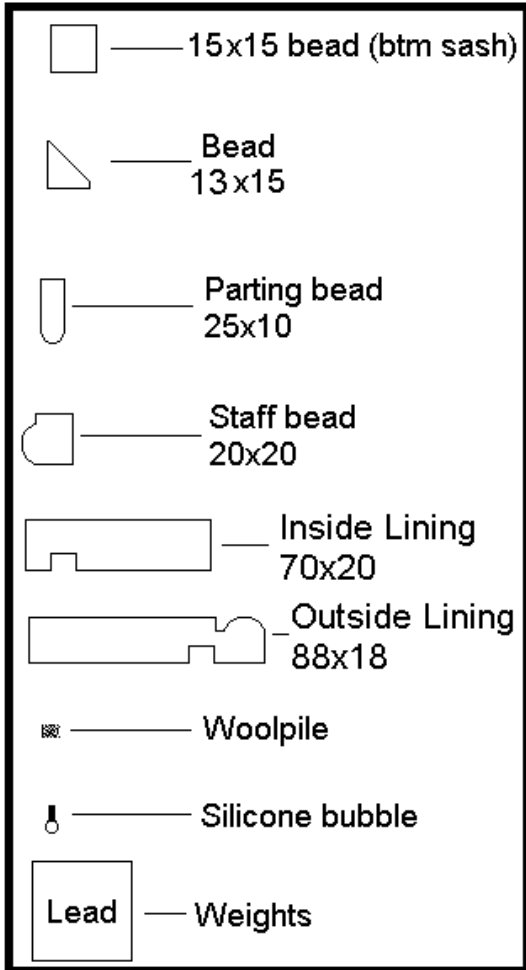
MARCH 2004



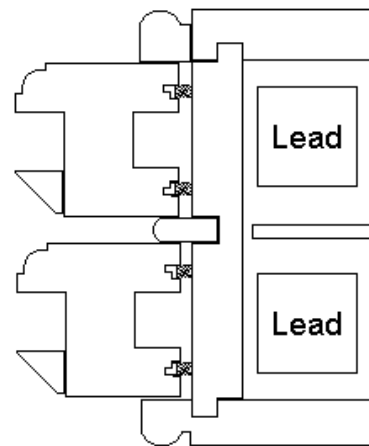
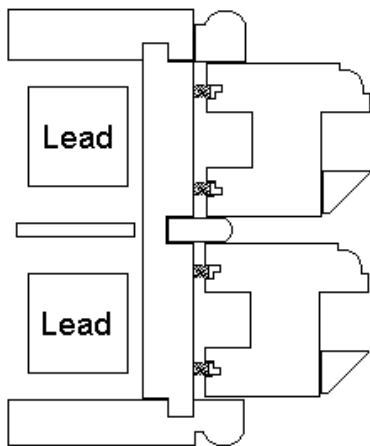
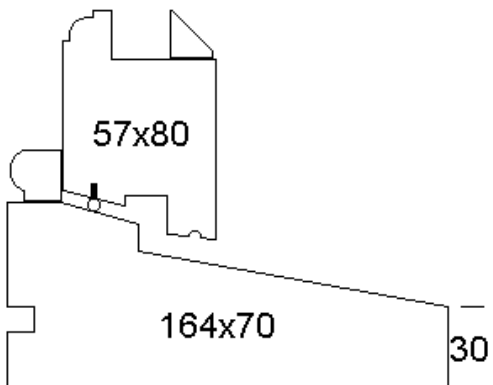
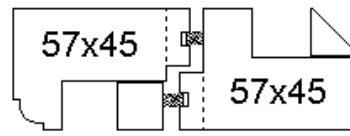
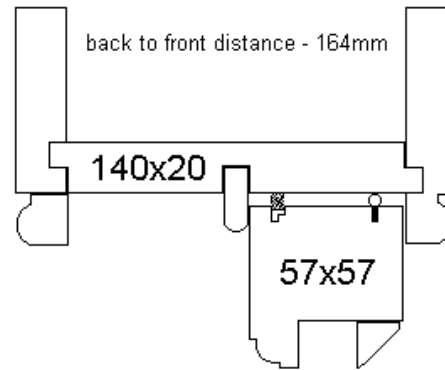
MARCH 2004



MARCH 2004



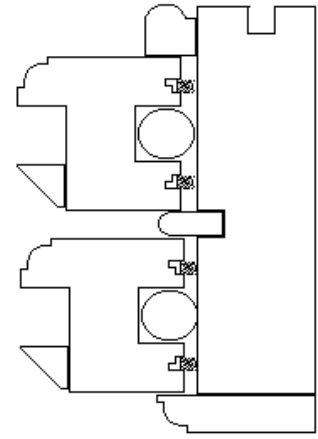
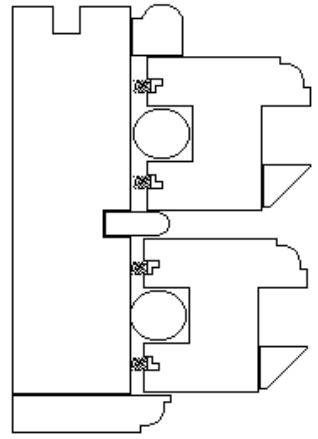
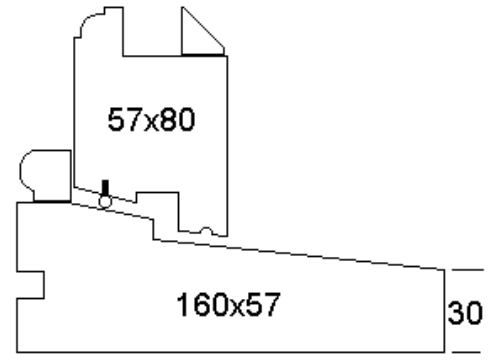
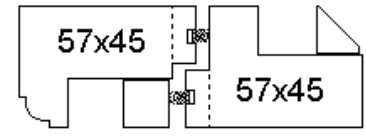
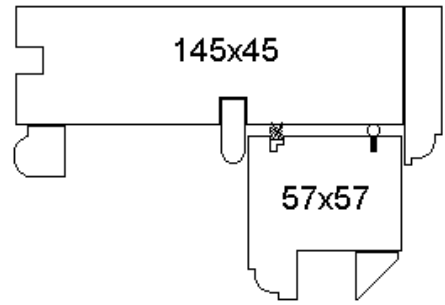
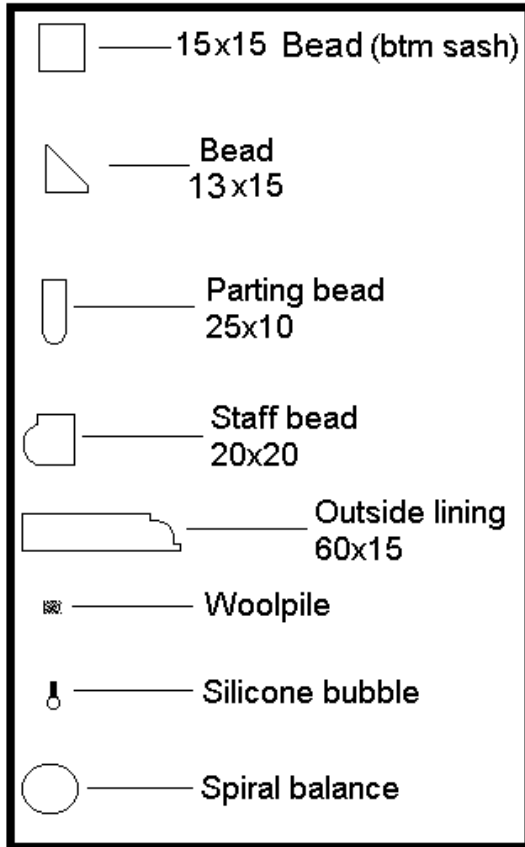
CLASSIC 300



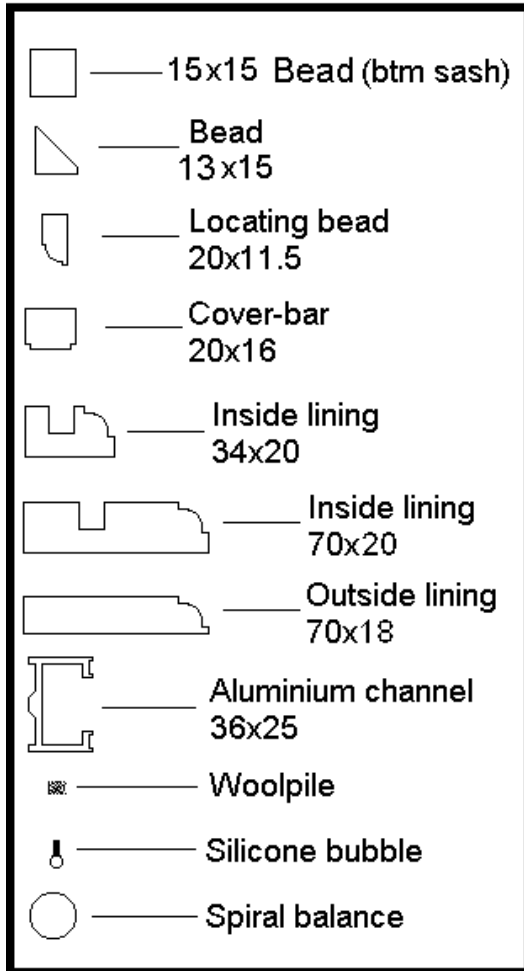
MARCH 2004

STRAIGHT SLIDER

back to front distance = 160mm

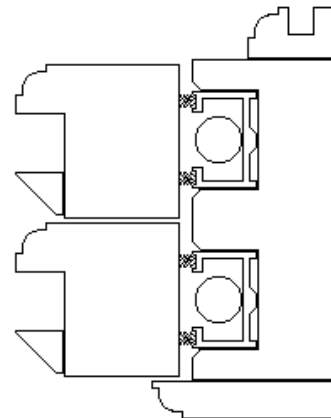
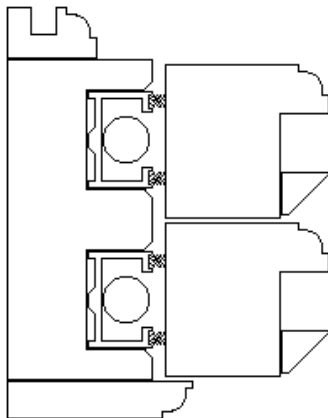
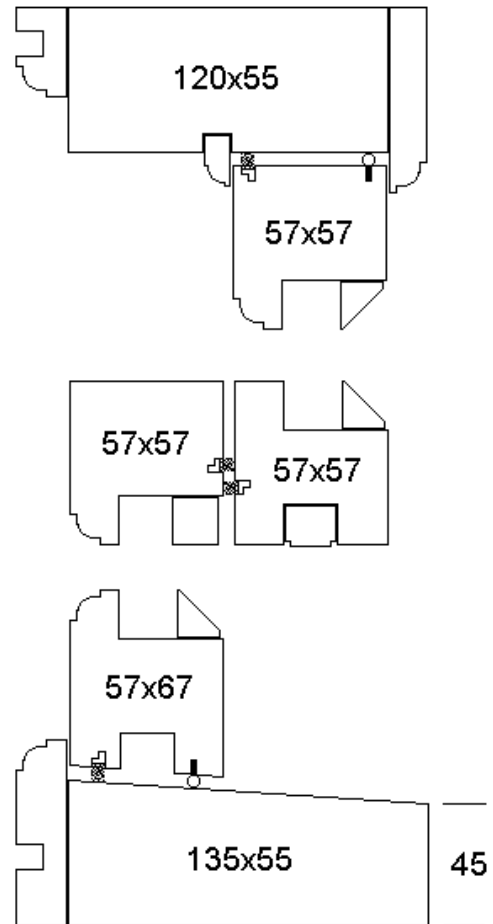


MARCH 2004



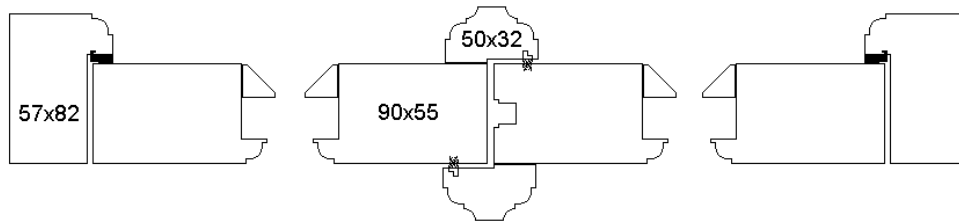
SLIDE & TILT

back to front distance = 155mm



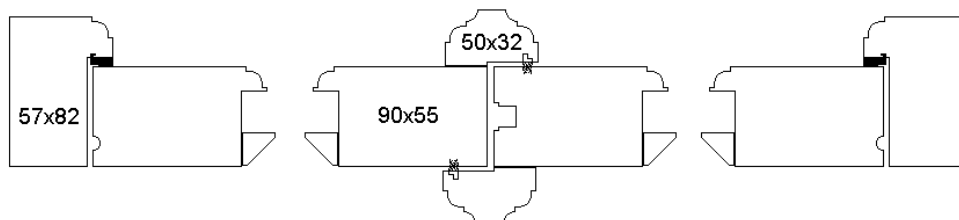
INWARD OPENING MULTI-POINT
LOCKING FRENCH DOORS

MARCH 2004

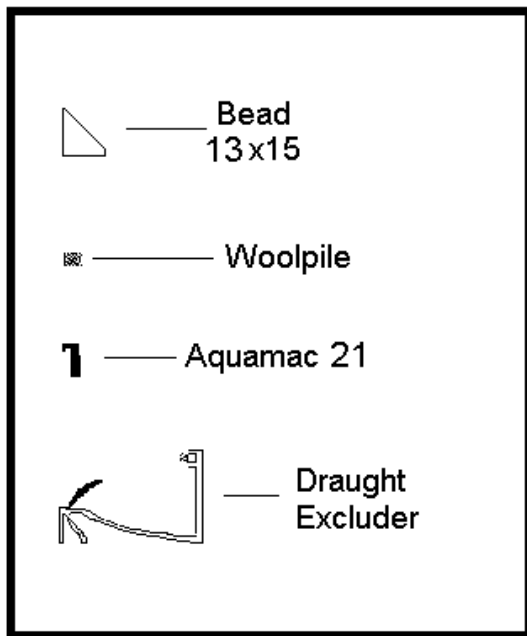


OUTWARD OPENING MULTI-POINT
LOCKING FRENCH DOORS

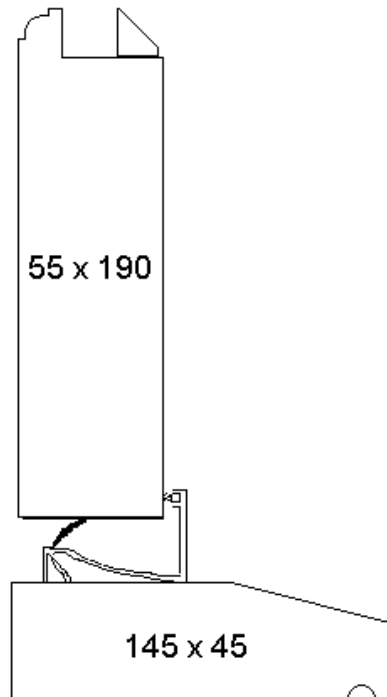
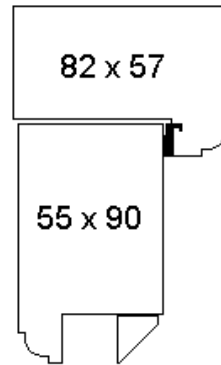
MARCH 2004



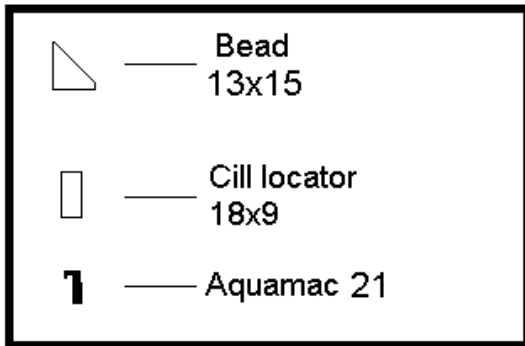
MARCH 2004



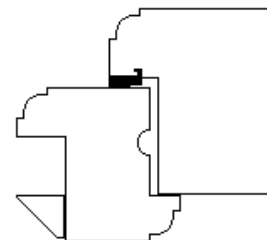
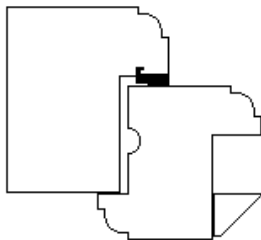
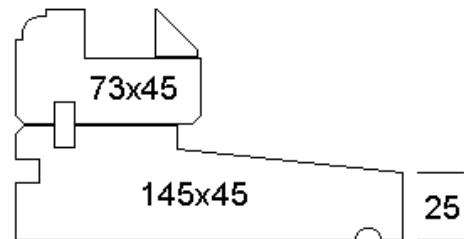
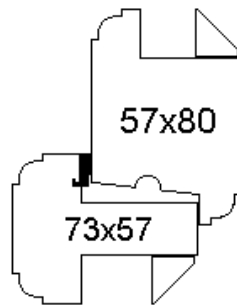
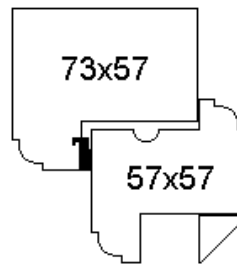
Pre Hung Door



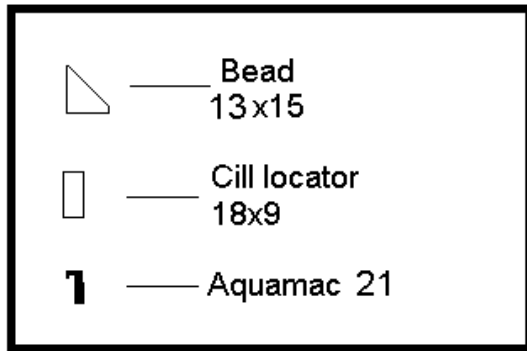
MARCH 2004



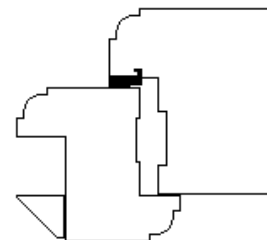
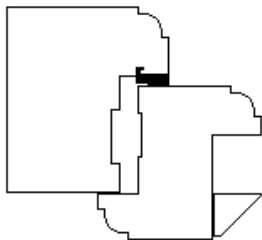
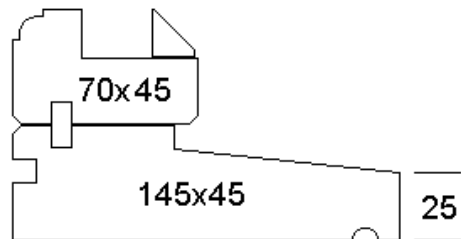
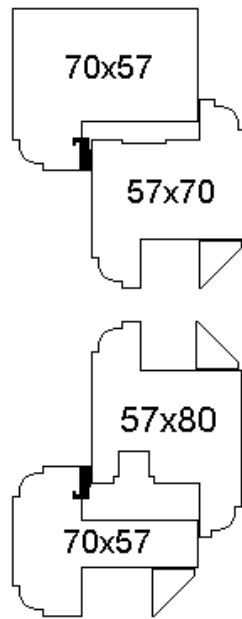
STANDARD CASEMENT



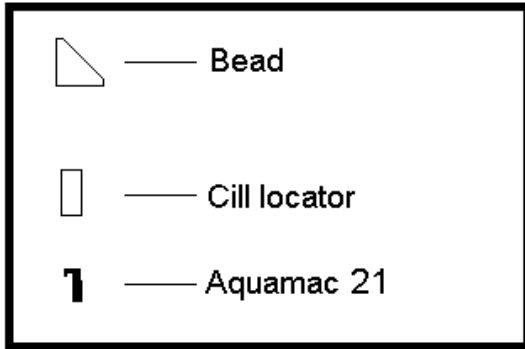
MARCH 2004



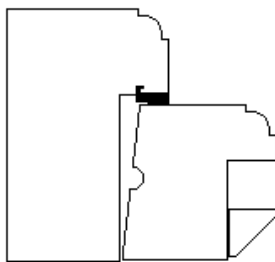
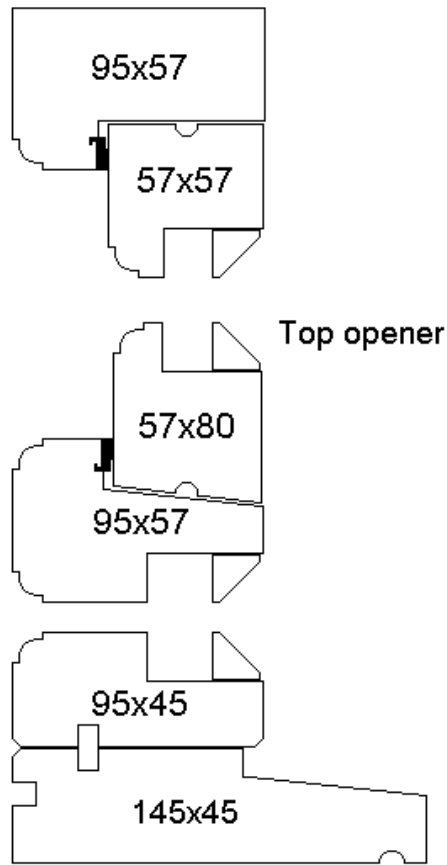
SHOOTBOLT CASEMENT



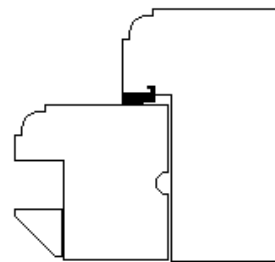
MARCH 2004



FLUSH SASH

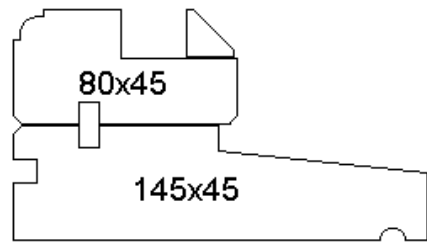
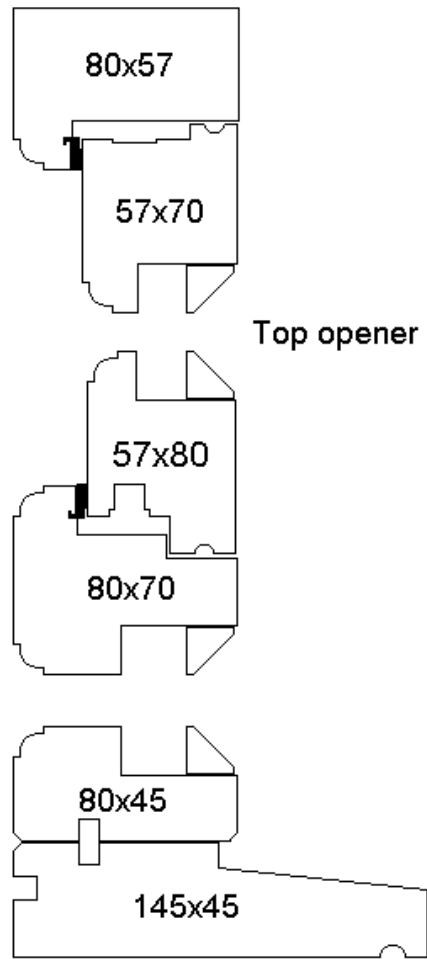
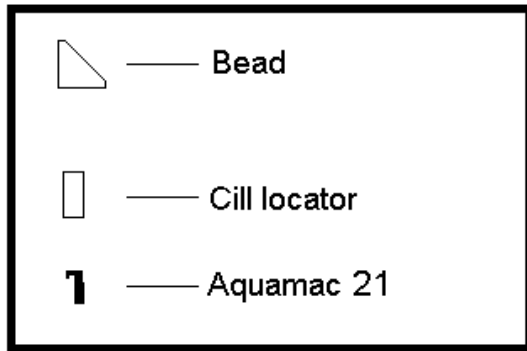


Side opener

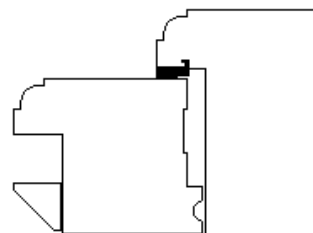


FLUSH SASH SHOOTBOLT

MARCH 2004

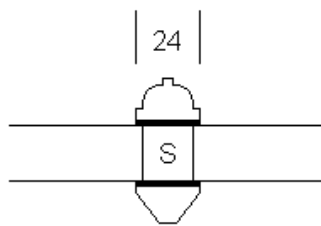


Side opener

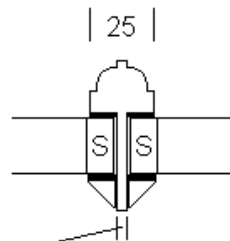


TIMBER

ASTRAGALS



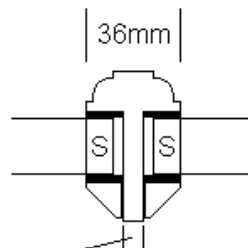
BG 300
GLAZING BAR



5mm

1mm of spacer tube showing
1mm clearance for units

GLAZING BAR



6mm

Spacer tube in line
3mm clearance for units